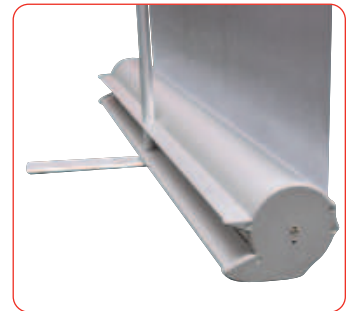
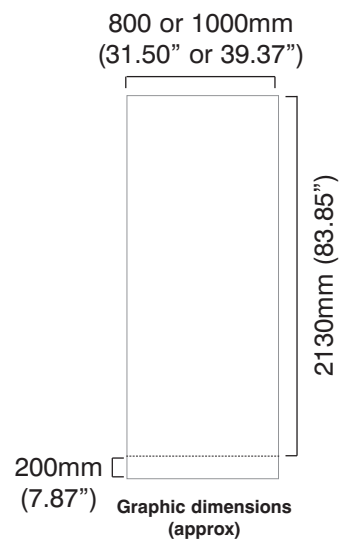




*A lightweight economy roller banner with slim base and bungee pole making it very compact, complete with a twist out foot for extra stability.*

## features & benefits

- Lightweight components
- Reusable spring loaded rail clamp system for easy graphic application
- Slide on/off easy change graphic applicator
- Twist out stabilising foot for extra stability
- Available in anodised silver
- Choice of 800mm or 1000mm widths
- Includes quality carry bag



### hardware specifications

Hardware Dimensions (mm):  
2200 (h) x 825 (w) x 400 (d) approx.  
86.61" (h) x 32.48" (w) x 15.75" approx.  
(Depth dimension refers to twist out foot)

Weight:  
4kg (8.8lbs) approx  
(including carry bag)

### graphic specifications

Visible Graphic Dimensions (mm):  
2130 (h) x 800 or 1000 (w) approx  
83.85" (h) x 31.50" or 39.37" (w) approx

Substrate:  
Add 200mm (7.87") to base of graphic to allow for roller mechanism.  
Recommended material thickness  
225 - 300 Microns (8.86 - 11.81 Mils)

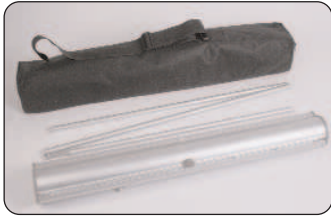
### additional info

Included in kit:  
Top rail, base, bungee pole set and carry bag

Availability:  
Anodised silver

# Assembly Instructions

## Banner stand assembly



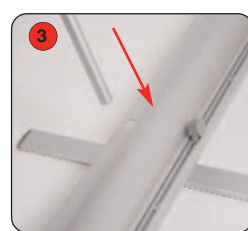
Kit includes: Top rail, base, bungee pole set and carry bag



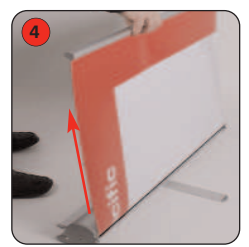
1 Assemble the bungee pole set.



2 Open out the stabilising foot.



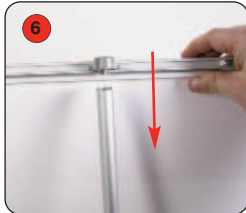
3 Fit the bungee pole into the banner stand base



4 Lift the top rail to raise the graphic from the base.



5 Lean the banner stand backwards and continue to extend the graphic.



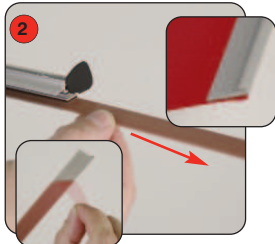
6 Secure the top rail cup onto the bungee pole.

Hold the Top rail whilst lowering the banner, (do not drop) to prevent damage to the graphic.

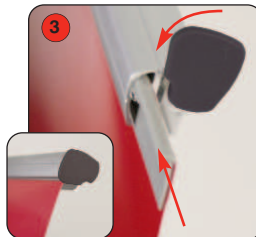
## Graphic attachment - Adhesive rail option



1 Rotate the rail end cap to expose the plastic adhesive rail insert.

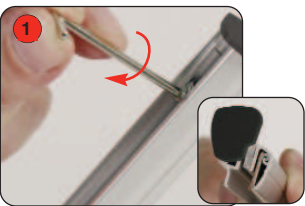


2 Slide the rail insert from the top rail. Adhere the insert to the front of the graphic.

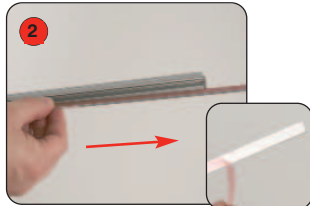


3 Slide the rail insert and graphic into the top rail. Close the rail end cap.

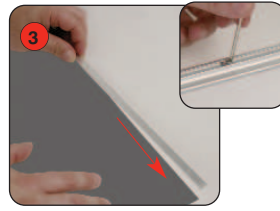
## Graphic attachment - Grippa rail option (ideal for textiles and PVC)



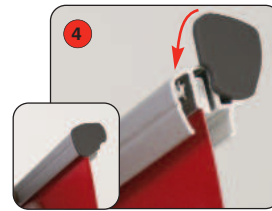
1 Using the Allen key stored in the base, loosen the top rail screws. Rotate the rail end cap to expose the steel flat bar.



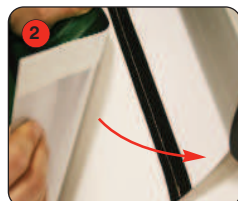
2 Slide the flat bar from the top rail and remove the backing paper.



3 Adhere the flat bar to the back of the graphic. Slide the flat bar and graphic into the top rail. Tighten the screws to secure the top rail. Close the rail end cap.



1 Align and adhere hook fastener squarely to the bottom shorter edge of the graphic. (attach to back of graphic)



2 Securely attach the graphic to the loop fastener on the banner leader strip.



3 Whilst holding the Top rail remove the locking pin from the base and gently allow the graphic to retract.

After fitting, the graphic should be left for 24 hours before use, to ensure the adhesive bonds sufficiently.